

Where are the new communication bess power stations



Overview

This Technical Brochure will provide a guide to how to implement BESS in a substation, both for existing and new substation projects. Integrating the BESS-connected substation to the power grid, it is necessary to understand the Grid codes.

Where are the new communication bess power stations



Battery Energy Storage Systems Report

BESS communication interconnections. below illustrates the communication pathways and points of coupling for a BESS, while Figure 17 outlines the OT and IT interconnections.

[Clark Bros. Inc., Renewable Energy EPC Company](#)

Designed to interconnect with Pacific Gas and Electric's (PG&E) Metcalf Substation, the project strengthens grid reliability and supports California's clean energy goals.



San Jose Tower solar container communication station Wind Power

This large-capacity, modular outdoor base station seamlessly integrates photovoltaic, wind power, and energy storage to provide a stable DC48V power supply and optical distribution.

[Ottawa Communications BESS Power Station Production](#)

The Ottawa BESS 2 Project will provide power to meet growing regional demand in the area, lease revenues for local landowners, additional property taxes for the City of Ottawa and



[Solar PV, Solar Ready, Battery Energy](#)



Storage System

Battery energy storage systems (BESS) are prescriptively required for newly constructed nonresidential and high-rise multifamily buildings. These systems

What is the 'new' keyword in JavaScript?

The new keyword in JavaScript can be quite confusing when it is first encountered, as people tend to think that JavaScript is not an object-oriented programming language. What is it? What problems



new operator

In the specific case of throw, throw new() is a shorthand for throw new Exception(). The feature was introduced in c# 9 and you can find the documentation as Target-typed new expressions.

How does the new operator work in JavaScript?

The new operator uses the internal [] method, and it basically does the following: Initializes a new native object Sets the internal [] of this object, pointing to the Function prototype



Difference between 'new operator' and 'operator new'?

A new expression is the whole phrase that begins with new. So what do you call just the "new" part of it? If it's wrong to call that the new operator, then we should not call "sizeof" the sizeof

When to use "new" and when not to, in C++?

You should use new when you wish an object to remain in existence until you delete it. If you do not use new then the object will be destroyed when it goes out of scope.



[Turkmenistan Peninsula Communications Bess Power Station](#)

Addis Ababa 380 Communication BESS Power Station Located at the site of the main landfill (Koshe) of the capital Addis Ababa is the first waste-to-energy power plant of Ethiopia, Reppie waste-to-energy

[Battery Energy Storage Systems: Main Considerations for Safe](#)

This webpage includes information from first responder and industry guidance as well as background information on battery energy storage systems (challenges & fires), BESS installation



New site design and philosophy for Stack Overflow: Starting February

Ah, but new experts will rise up and embrace the new, friendly Stack Overflow that they have always wanted. And maybe rediscover the same things the bitter, hateful old guard found.

What is the Difference Between 'new object()' and 'new {}' in C#?

Note that if you declared it var a = new { }; and

var o = new object();, then there is one difference, former is assignable only to another similar anonymous object, while latter being object, it

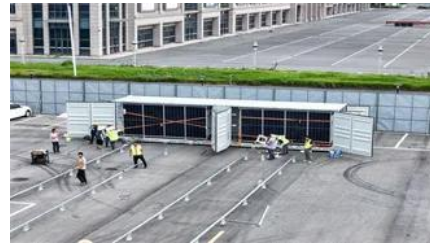


Projects , esVolta

Explore the esVolta project portfolio to see how we're powering progress with cutting-edge energy storage solutions that enhance grid reliability, enable

[Is JavaScript's "new" keyword considered harmful?](#)

It is NOT 'bad' to use the new keyword. But if you forget it, you will be calling the object constructor as a regular function. If your constructor doesn't check its execution context then it won't notice that 'this'



BATTERY ENERGY STORAGE SYSTEMS (BESS)

Our compact and modular power distribution blocks distribute or group single phase or three phase electrical circuits from a single input source to several devices in the branch circuit.

[Design guideline for substations connecting battery](#)

For BESS-connected new substations, the equipment ratings and control and protection system can be designed to support the BESS rating and





javascript

83 new() describes a constructor signature in typescript. What that means is that it describes the shape of the constructor. For instance take {new(): T; }. You are right it is a type. It is the type of a class

Contact Us

For catalog requests, pricing, or partnerships, please visit:
<https://www.bachelorpartyvenue.co.za>