

What is the normal volt of the battery in the battery cabinet



Overview

For most common battery types, such as lead-acid and lithium-ion, fully charged voltages vary: lead-acid batteries typically read 12. Knowing these values helps ensure proper usage and maintenance.

What is the normal volt of the battery in the battery cabinet



[Blood pressure chart: What your reading means](#)

Ideal blood pressure is categorized as normal. Increased blood pressure may be categorized as elevated, stage 1 or stage 2 depending on the specific numbers. A diagnosis of high

What Is a Normal Battery Voltage?

A fully charged, healthy 12-volt battery should display a resting voltage between 12.6 and 12.7 volts. This measurement must be taken after the battery has rested for several hours, ideally overnight, to allow



Hydrocephalus

Normal-pressure hydrocephalus. Most common in older adults, this type causes the brain's ventricles to enlarge, but the pressure of the fluid stays within a typical range. It can affect

Fully Charged Battery: How Many Volts And Optimal Voltage Levels

A 12-volt battery, which includes six cells, reaches a full charge voltage of approximately 12.7 volts. Optimal voltage levels are essential for safe usage and charging.



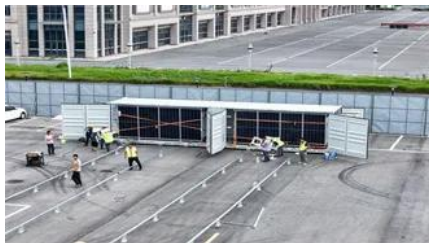
Hyponatremia



Power Storage Battery Cabinet Voltage: The Backbone of Modern

Remember: In the world of power storage battery cabinets, voltage isn't just a number - it's the heartbeat of modern energy systems. Whether you're powering a smartphone or a smart city,

Hyponatremia is the term used when your blood sodium is too low. Learn about symptoms, causes and treatment of this potentially dangerous condition.



Mental health: What's normal, what's not

Mental health is the overall wellness of how you think, behave and manage your feelings. A mental health condition may be present when patterns or changes in thinking, feeling, or behaving cause

[Good Battery Voltage Guide for All Battery Types](#)

Nominal Voltage - The general or "average" voltage the battery provides during discharge. For example, most lithium-ion batteries have a



[What Should Battery Pack Voltage Be When Fully Charged?](#)

For most common battery types, such as lead-acid and lithium-ion, fully charged voltages vary: lead-acid batteries typically read 12.6V to 12.8V, while lithium-ion batteries can reach up to

What Should A 12 Volt Battery Read When Fully

A fully charged 12-volt battery should read between 12.4 and 12.8



Cholesterol ratio or non-HDL cholesterol: Which is most important?

For predicting your risk of heart disease, many healthcare professionals now believe that determining your non-HDL cholesterol level may be more useful than calculating your cholesterol

High blood pressure (hypertension)

Hypertension can be diagnosed by performing careful and repeated measures of the blood pressure. Blood pressure categories include normal blood pressure, defined as a systolic



Specifications for Lithium-ion Battery Cabinets

NOTE: The battery temperature must return to room temperature ± 3 °C (5 °F) before a new discharge at maximum continuous discharge power. If not, the battery breaker may be tripped due to

Blood urea nitrogen (BUN) test

Learn about the blood urea nitrogen (BUN) test to assess kidney function and what possible results could mean.





Battery Voltage Chart , Battery Tools

The normal voltage range for a fully charged 12V battery is between 12.6 and 12.8 volts. However, the voltage level can vary depending on the type of battery, its

Ferritin test

Overview A ferritin test measures the amount of ferritin in the blood. Ferritin is a blood protein that contains iron. This test can be used to find out how much iron the body stores. If a ferritin



PSA test

The PSA test is a blood test used primarily to screen for prostate cancer. The test measures the amount of prostate-specific antigen (PSA) in your blood. PSA is a protein produced by

[Lead Acid Battery Voltage Chart & Checking Methods](#)

Discover a detailed lead acid battery voltage chart and learn effective methods to check your battery's voltage for optimal performance and



Prednisone (oral route)

Description Prednisone provides relief for inflamed areas of the body. It is used to treat a number of different conditions, such as inflammation (swelling), severe allergies, adrenal problems,

12V Battery Voltage Chart -

A fully charged 12V battery should read around 12.6 to 12.8 volts when at rest. This simple number tells you more than you might think-it reflects



Contact Us

For catalog requests, pricing, or partnerships, please visit:
<https://www.bachelorpartyvenue.co.za>