

What is the charging voltage of the solar cabinet system



What is the charging voltage of the solar cabinet system



What is the maximum charging voltage of a Li-Ion battery?

I will design a charging circuit for an ICR26650 3.7 V Li-Ion battery. I'm considering using the BQ24070 chip in the design. The battery charging voltage of this chip is given as 4.2 V.

Solar Battery Cabinet Equipment Enclosures for on-grid or off-grid

The cabinet save time on-site and provide the customer with a neat, safe enclosure for their solar system installation. Our solar battery cabinet systems are storing Pylontech lithium-iron phosphate



All in one C&I Energy Storage Cabinet

JNTech all-in-one solar storage system integrates an inverter and energy storage cabinet into a single unit, providing a compact and efficient solution for solar and

charging

It will just make much more sense to buy a Type-C PD charger if your devices support it, rather than still dealing with the problem of which USB adapters you can use to convert to Type-C



How to Calculate the time of



Charging and Discharging of battery?

How do I calculate the approximated time for the Charging and Discharging of the battery? Is there any equation available for the purpose? If yes, then please provide me.

batteries

Question How long should you wait after usage before charging? For example, if I use a battery powered string-trimmer or lawn-mower and the battery has gone empty (and probably quite warm,) how long



batteries

Introduction Various resources state that the optimal method of charging a li-ion cell -- such as one found in a mobile phone -- is to charge at a constant current (usually

batteries

2 Don't use a TP4056 for charging LiFePO 4 batteries; it won't stop charging until about 4.2 V has been reached and while some LiFePO 4 batteries will probably handle that without

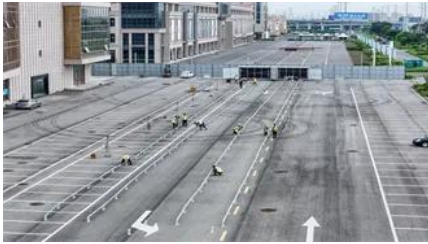


Charging lead-acid batteries?

Charging lead-acid batteries with a power supply Lead-acid batteries can be charged manually with a commercial power supply featuring voltage regulation and current limiting. Calculate

[Sunway Intelligent Air Cooling 50kW 100kWh Outdoor](#)

Optimized for commercial and industrial energy storage with 50kW rated AC power and 100kWh battery capacity.



Creating a 12.6 V 3S Lithium-ion Charging Circuit from 5 V USB-C

I am constrained to the following: 3S lithium-ion battery of 2600 mAh charging at 1 A, USB-C connector with 5 V, the BMS is already included with the battery. My main question is if this

[What is the voltage of the energy storage battery cabinet?](#)

The voltage of energy storage battery cabinets typically ranges from 12V to 800V, influenced by application requirements, technology used, and the



15kW / 35kWh Hybrid Solar System Integrated Energy Storage Cabinet

Equipped with a robust 15kW hybrid inverter and 35kWh rack-mounted lithium-ion batteries, the system is seamlessly housed in an IP55-rated cabinet for enhanced protection against water and dust,

[Custom All in One 100kw 215kwh Lithium Battery](#)

Flexible Power Options: Supports both 50kW and 100kW output to suit various energy needs. High Capacity: 215kWh lithium battery pack stores ample energy





BATTERY CABINET

An existing PWRcell Battery Cabinet can be upgraded with additional modules. Use the graphic below and the chart on the back of this sheet to understand what components you need for your chosen

20/30/50/100KWH High Voltage Cabinet Energy

Built with standard 5.12kWh battery modules, the system supports 4-14 modules in series for flexible voltage and capacity configuration. With up to 8 clusters in



[373kWh Liquid Cooled Energy Storage System](#)

1500V Liquid Cooled Battery Energy Storage System (Outdoor Cabinet). Easily expandable cabinet blocks can combine for multi MW BESS projects.

[Ultimate Guide to Solar Battery Charging: SOC](#)

We'll break down SOC vs. voltage, fix charging issues, and share pro tips to keep your LiFePO4 or lead-acid battery in top shape. Plus, we've got charts and a



[How can I tell charge-only USB cables from USB data cables?](#)

I'd throw out all the "charge-only" cables. As the other answers have indicated, charging over a

cable with the data lines disconnected is slow at best, and overloads the port at worst. If you want to inhibit

Why is charging with Lithium batteries with a small load dangerous

I'm well aware of the best practices for charging lithium chemistry batteries, and how the charges themselves work. I've never had a water tight explanation on why having a load on a battery



Contact Us

For catalog requests, pricing, or partnerships, please visit:
<https://www.bachelorpartyvenue.co.za>