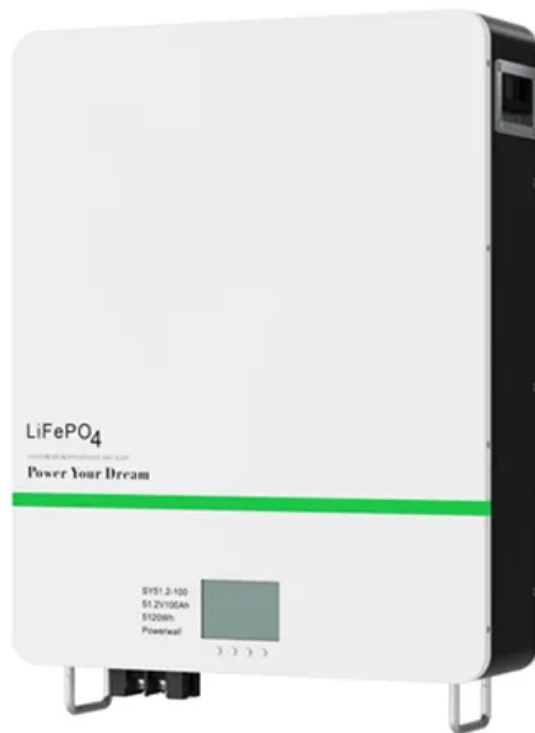


# Turn on battery storage



## Overview

---

The fastest way to enable Battery Saver is through the Quick Settings menu. To open it, click the hidden "Quick Settings" button in your taskbar---it's located where you see the Wi-Fi, Speaker, and Battery indicator icons. Or you can press Windows+a on your keyboard.

## Turn on battery storage

---



### [Enable or Disable Sync Your Settings in Windows 10](#)

If you turn on Other Windows settings, Windows syncs some device settings (for things like printers and mouse options), File Explorer settings, and notification preferences. For a complete

### [How to manage power settings on Windows 11](#)

In this guide, we'll show you the steps to configure the Windows 11 power settings to increase battery life on your laptop or keep the power usage



### **How to Enable or Disable Driver Signature Enforcement in Windows 10**

This option will only temporarily disable driver signature enforcement in Windows 10 allowing you to install unsigned drivers until you restart the computer next. The next time you

### [How to Turn On or Off Battery Saver in Windows 10](#)

By default, battery saver is turned off unless you manually turn on battery saver, or you have battery saver set to automatically turn on when your





## Turn On or Off Search online and include web results in Windows 10

If you turn off search online and include web results, search will not provide web results, or use my location or online search history. After you type a search term, you can click/tap on Search

## How to enable Energy Saver on Windows 11

On Windows 11, you can enable the "Energy Saver" feature to save electricity and conserve battery life on laptops and desktop computers, even



## Turn On or Off Real-time Protection for Microsoft Defender Antivirus

Turn Off Real-time Protection for Microsoft Defender Antivirus in Windows Security If you use this option to turn off real-time protection for Microsoft Defender Antivirus, it will only be

## [Turn Windows Features On or Off in Windows 10 , Tutorials](#)

After you turn off a feature, you can turn it back on at any time. This tutorial will show you how to turn Windows features on or off for all users in Windows 10. You must be signed in as an

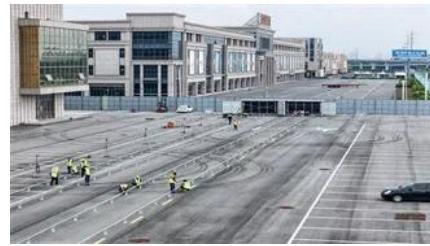


## Battery saving tips for Windows

Learn how to extend your PC's battery life using battery saver and other power-saving tips for Windows.

## [What is Battery Saver? Turn it on or off on Android](#)

Battery Saver is a power saving mode available on Android



## **How to Turn On or Off Microsoft Defender Firewall in Windows 10**

How to Turn On or Off Microsoft Defender Firewall in Windows 10 Starting with Windows 10 build 16193, Windows Firewall has been renamed to Windows Defender Firewall, and now

## **Turn On or Off Projecting to this PC in Windows 10 , Tutorials**

Published by Shawn Brink Category: Hardware & Drivers 05 Oct 2022 How to Turn On or Off Projecting to this PC in Windows 10 The Projecting to this PC feature uses the Connect app to



## [How to Turn On Battery Saver on Windows 11](#)

Battery Saver is a great way to increase the longevity of your battery when you are not near a power source. In this post, we will be seeing how to

## [Enable or Disable Touchpad in Windows 10 , Tutorials](#)

How to Enable or Disable Touchpad in Windows 10 If your Windows 10 PC (ex: laptop) has a built-



in touchpad, you may want to enable or disable on demand. This tutorial will show you



## Power and Battery Settings in Windows 11

To manage the battery saver mode settings, which limits background activity when using battery power, click the "Battery saver" setting to expand it.



## Power settings in Windows 11

You can use Screen and sleep settings to save energy and make your battery last longer.



## Turn On or Off Sync Settings for Microsoft Account in Windows 10

27 Sep 2025 How to Turn On or Off Sync Your Settings in Windows 10 When Sync settings is turned on, Windows syncs the settings you choose across all your Windows 10 devices that you've signed in to

## [Get the most life from your Android device's battery](#)

You don't need to teach your phone the battery's capacity by going from full charge to zero, or zero to full. We recommend that you occasionally drain your battery to under 10% and then charge



## Enable or Disable Windows Security in Windows 10 , Tutorials



The Windows Security app uses the Windows Security Service (SecurityHealthService or Windows Security Health Service), which in turn utilizes the Security Center service (wscsvc) to

## Contact Us

---

For catalog requests, pricing, or partnerships, please visit:  
<https://www.bachelorpartyvenue.co.za>