

# Standard value of light transmittance of photovoltaic panels

LPW48V100H  
48.0V or 51.2V



## Overview

---

Visible light transmittance (VLT) is a percentage of the visible portion of the solar energy spectrum coming through the glass. It is expressed as a figure between 0 (no light) and 100 (all light).

## Standard value of light transmittance of photovoltaic panels

---

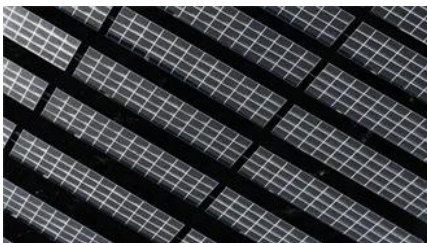


### ISO 23237:2023

This document specifies a test method of light transmittance for the laminated solar photovoltaic glass for use in building. This document is applicable to flat modules with light transmittance in the visible

### [Standard , The Aftermarket Leader Since 1919](#)

Modern vehicles are equipped with more sensors than ever before. Standard's state-of-the-art Engine Sensors are designed with multiple features to optimize accuracy, speed, and durability, and provide



### STANDARD , English meaning

A standard language is a variety of language that is used by governments, in the media, in schools and for international communication. There are different standard varieties of English in the world, such

### Key Glass Performance Measures

Visible light transmittance (VLT) is a percentage of the visible portion of the solar energy spectrum coming through the glass. It is expressed as a figure between



### INTERNATIONAL STANDARD 9050



If the transmittance or reflectance curve recorded by the spectrometer exhibits a high level of noise for some wavelengths, the values to be considered for those wavelengths should be obtained after a

## Performance value terms

Solar Energy Direct Transmittance ( $T_e$ , %) is the percentage of incident solar energy in the wavelength range of 300 nm to 2500 nm that is directly transmitted



## [Standard: Definition, Meaning, and Examples](#)

The word "standard" is frequently used across various fields, including education, business, technology, and governance. Its role as a descriptor of norms and benchmarks makes it a

## STANDARD Definition & Meaning

The meaning of STANDARD is a conspicuous object (such as a banner) formerly carried at the top of a pole and used to mark a rallying point especially in battle or to serve as an emblem.



## [The Standard , Saint Louis MO Apartments For Rent](#)

Located just steps away from St. Louis University, The Standard provides students with a residential option unlike any other. Its prime location, adjacent to campus, lets residents indulge in a vibrant,

## The Standard St. Louis , St. Louis MO

April events are here ? This month at The Standard St. Louis, we're all about sustainability- join us as we go green, give back, and have some fun while doing it.



### [STANDARD Definition & Meaning , Dictionary](#)

A standard is an authoritative principle or rule that usually implies a model or pattern for guidance, by comparison with which the quantity, excellence, correctness, etc., of other things may be determined:

## Standard value of light transmittance of photovoltaic panels

Which solar energy transmittance is applicable to a flat module? This document is applicable to flat modules with light transmittance in the visible range (wavelengths from 380 nm to 780 nm).



### [Apartments Near SLU , The Standard at St. Louis](#)

Located just minutes away from Saint Louis University, our apartments near SLU put residents in the middle of all the action, close to campus and other popular destinations for shopping, dining, and

## ET ISO 9050: Glass in building -

This International Standard specifies methods of determining light and energy transmittance of

solar radiation for glazing in buildings. These characteristic data can serve as a basis for light, heating and



## Examination of an Optical Transmittance Test for Photovoltaic

The Encapsulation Committee within the International Electrotechnical Commission (IEC) Technical Committee 82 (TC82) on PV Working Group 2 (WG2) on PV modules has created a standard

## Determining the optimal visible light transmittance of semi-transparent

Therefore, this study sought to present the optimal visible light transmittance (VLT) of STPV that simultaneously considers energy performance and the occupants' satisfaction according



## Standard Test Methods for Solar Energy Transmittance and

6.5 Calculation-Solar energy transmittance or reflectance is calculated by integration. The distribution of solar energy as reported by Parry Moon4 for sea level and air mass 2 shall be used.

## The Standard

We provide insurance, retirement and investment products and services. Work with our team of remarkable people united by



compassion and a genuine desire to help others.

## Contact Us

---

For catalog requests, pricing, or partnerships, please visit:  
<https://www.bachelorpartyvenue.co.za>