

Pile height 2 8 meters to install photovoltaic panels



Overview

Our Solar Pile Driver delivers eco-friendly, high-efficiency pile installation for photovoltaic projects, running on clean solar energy for zero emissions and lower operational costs.

Pile height 2 8 meters to install photovoltaic panels

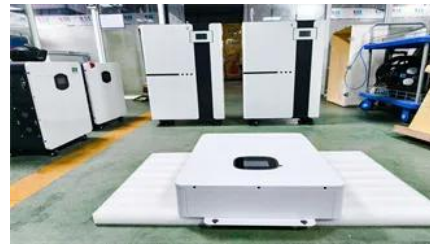


[Solar Panel Size & Dimensions Guide 2025 , Complete Specs](#)

In this comprehensive guide, you'll learn everything you need to know about solar panel sizing, from standard dimensions to weight considerations, helping you determine the perfect solar

[Solar Panel Sizes, Dimensions & Weight , Solar Choice](#)

What are the different solar panel sizes and how many can you fit onto your roof? Our guide gives you the information you need.

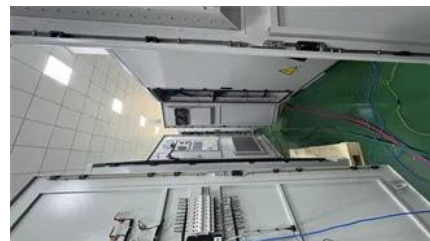


Pile Drivers Heavy Duty Solar Pile Driver Efficient Ground Mount

Our Solar Pile Driver delivers eco-friendly, high-efficiency pile installation for photovoltaic projects, running on clean solar energy for zero emissions and lower operational costs. Equipped with a

[Screw Pile Inspection for Solar Project , PDF](#)

Step 1: Check the distance between piles with a meter, including north-south and east-west. Step 2: Check the exposed length of the screw pile with a meter.





CNTSUN MANUAL

A solid knowledge of mechanical installation and electrical engineering is also required. Master the correct usage of tools to ensure all electrical equipment is intact during the process.

[Load-Carrying Capacity of Piles , SkyCiv Engineering](#)

Evaluating the ultimate load-carrying capacity of a single pile is one of the most important aspects of pile design, and can sometimes be complicated. This article will walk through the



[Photovoltaic sheet pile height specification requirements](#)

To calculate the structural load of solar panels on a roof, several factors must be considered, including the number and weight of the panels, the weight of the mounting system and components, and any

[Pile height 2 8 meters to install photovoltaic panels](#)

"About 10 years ago, customers approached us and opened our eyes to what potential was in the pile driver market, especially for the installation of ground-mounted solar panels," said Ed Savage,



Community Solar Project Initial Study/Mitigated Negative Declaration

1.1 Introduction between Roseville Electric Utility (Roseville Electric) and Sunworks. The proposed

project involves installing an estimated 3,348 photovoltaic (PV) panels to support a 1,103 kilowatt direct

Customize this Template

Identify the different types of solar PV structures. Know the unique aspects of solar PV structures and why a Manual of Practice is needed. Learn about some key challenges that the solar PV industry



Step-by-Step Design of Large-Scale Photovoltaic Power Plants

Due to the increasing number of photovoltaic (PV) plant installations, there is a higher demand for feasibility studies and detailed designs of large-scale PV power plants (LS-PVPPs). It is necessary

[Pile height 2 8 meters to install photovoltaic panels](#)

In computing schemes A-1 to A-4 and B-1 to B-4, it is evident that, as the installation tilt angle of the solar photovoltaic panel increases, the pressure on the windward



Contact Us

For catalog requests, pricing, or partnerships, please visit:
<https://www.bachelorpartyvenue.co.za>