

**On which floor do  
communication base stations  
usually use electricity**



## Overview

---

They are designed for installation in technical rooms with controlled temperature and humidity conditions and, in principle, with unlimited access to electricity grid, so power consumption is not considered a critical parameter, although the aim is to keep it as low as possible.

## On which floor do communication base stations usually use electricity



### 'Floor' and 'ceiling' functions

Is there a convenient way to typeset the floor or ceiling of a number, without needing to separately code the left and right parts? For example, is there some way to do  $\lceil x \rceil$  instead of

### Ceiling and floor functions

What are some real life application of ceiling and floor functions? Googling this shows some trivial applications.



### Base station

In traditional wireless communications, it can refer to the hub of a dispatch fleet such as a taxi or delivery fleet, the base of a TETRA network as used by

### Formula for the floor function

The most natural way to specify the usual principal branch of the arctangent function basically uses the idea of the floor function anyway, so your formula "for" the floor function is correct



### Integral concerning the floor function

Integral concerning the floor function Ask



Question Asked 1 year, 7 months ago Modified 1 year, 7 months ago

## macros

Use `\xintFloor` command from the `xintfrac` package. It is completely expandable, hence can even go in an `\edef` or other contexts needing expandability. It natively accepts fractions such as  $1000/333$  as



## Wireless Base Station

A wireless base station usually refers to the antenna tower and the associated BBU. The BBU used to be located in a powered room at the bottom of a cellular tower as is shown in Fig. 8.2.

## [Solving equations involving the floor function](#)

Solving equations involving the floor function Ask Question Asked 13 years, 1 month ago Modified 2 years, 4 months ago



## [Understand Cellphone Basestation Technology >>](#)

Tower: In order to raise the antennas to a sufficient height to gain the coverage required, the traditional approach is to use a tower, although the base stations

## [Complete Guide to 5G Base Station](#)

## Construction , Key Steps.

Where does the electricity for communication base stations come from? It starts from large power plants and flows through substations, distribution stations, and along transmission lines,



## **Base Stations and Cell Towers: The Pillars of Mobile Connectivity**

Base stations use antennas mounted on cell towers to send and receive radio signals to and from mobile devices within their coverage area. This communication enables users to make

## **Base Stations and Energy Levels**

Base stations transmit signals from one cell site to the next. Antennas are typically placed high above the ground (on towers or other tall



## **integration**

Integral containing floor function and derivative  
Ask Question Asked 2 years, 1 month ago  
Modified 2 years, 1 month ago

## **ICNIRP , Base Stations**

Base stations are required to enable mobile phone communication, including calls and data transfer. They consist of different electronic components and antennas and can be located on masts, on



## How to Graph Floor/Ceiling Functions in



## Base Stations

Base stations form a key part of modern wireless communication networks because they offer some crucial advantages, such as wide coverage,



## [Adjusting the height of math floor symbol](#)

The height of the floor symbol is inconsistent, it is smaller when the fraction contains a lowercase letter in the numerator and larger when the fraction contains numbers or uppercase letters



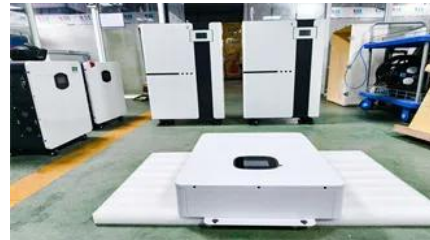
## [LaTeX \(PGFPlots\)](#)

The PGFmath package includes a ceil and a floor function. The pgfplots offers a few options for Constant Plots (see manual v1.8, subsection 4.4.3, pp. 57ff.). The option jump mark left



## [Base station types: a solution for every deployment scenario](#)

They are designed for installation in technical rooms with controlled temperature and humidity conditions and, in principle, with unlimited access to electricity grid, so power consumption



## [Breaking Down Base Stations - A Guide to Cellular Sites](#)

What are the main components of a telecom tower? The technology that makes up most telecom tower sites can be boiled down to three main

## How to write ceil and floor in latex?

Is there a macro in latex to write  $\text{ceil}(x)$  and  $\text{floor}(x)$  in short form? The long form  $\left\lceil x \right\rceil$   $\left\lfloor x \right\rfloor$  is a bit lengthy to type every time it is used.



## Contact Us

---

For catalog requests, pricing, or partnerships, please visit:  
<https://www.bachelorpartyvenue.co.za>