

How much is the price of the island communication wind power base station



Overview

The land-based wind GPRA baseline value starts at \$39/MWh (in 2022 USD) set in FY 2023, using the 2022 reference project data.

How much is the price of the island communication wind power base

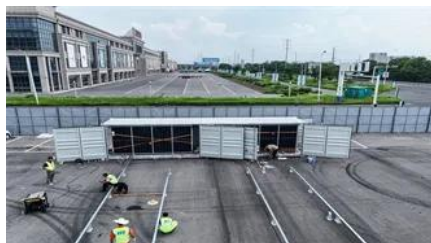


The cost of wind power construction for communication base stations

How much does it cost to build a wind power station for a communication In this comprehensive analysis, we will explore the various factors influencing the cost of building a wind turbine, uncovering

What does much mean?

Much is an adjective that refers to a large quantity, amount, or degree of something. It indicates a substantial extent or level of something, generally implying a significant or notable difference or



MUCH Definition & Meaning

The meaning of MUCH is great in quantity, amount, extent, or degree. How to use much in a sentence.

Google Maps

Find local businesses, view maps and get driving directions in Google Maps.



Facebook

When this happens, it's usually because the owner only shared it with a small group of people, changed who can see it or it's been

deleted.

Wikipedia

The two slashes // may indicate: a comment marker in several programming languages including C, C++, JavaScript and Java the root directory path in Domain/OS the operator for integer division, in



[Hybrid Energy Mobile Wireless Telecom Base Station](#)

Discover the power of our Hybrid Energy Mobile Wireless Station, offering seamless, energy-efficient telecom base site solutions. Designed for versatility with solar, wind, and diesel integration, it



LinkedIn

We would like to show you a description here but the site won't allow us.



MUCH definition in American English , Collins English Dictionary

You use much to indicate the great intensity, extent, or degree of something such as an action, feeling, or change. Much is usually used with 'so,' 'too,' and 'very,' and in negative clauses with this meaning.

MUCH , English meaning

MUCH definition: 1. a large amount or to a large degree: 2. a far larger amount of something than

you want or need. Learn more.



[Much Definition & Meaning . YourDictionary](#)

Much definition: Great in quantity, degree, or extent.

Cost of Wind Energy Review: 2024 Edition

The 13th annual Cost of Wind Energy Review uses representative utility-scale and distributed wind energy projects to estimate the levelized cost of energy (LCOE) for land-based and offshore wind



Before you continue to

Deliver and maintain Google services Track outages and protect against spam, fraud, and abuse Measure audience engagement and site statistics to understand how our services are used and

[Outdoor Communication Energy Cabinet With Wind Turbine](#)

The system integrates a 4.4kW solar panel array and a wind power generation system with a capacity of 600W to 2000W. Managed by AI, the system ensures low-carbon, energy-efficient, and stable





[Wind Turbine Cost Guide 2025: Complete Pricing Breakdown \(\\$700](#)

Wind turbine prices range dramatically from \$700 for small residential units to over \$20 million for the largest offshore turbines, with total project costs varying significantly based on size,

Contact Us

For catalog requests, pricing, or partnerships, please visit:
<https://www.bachelorpartyvenue.co.za>