

How many volts are used to charge a 12v lithium battery pack



How many volts are used to charge a 12v lithium battery pack



Charging Lithium Batteries: The Basics

Most modern lithium chargers instead stop automatically or maintain a very light top-off voltage around 13.4-13.6V for a 12-volt LiFePO4 system.

Understanding the Maximum Charging Voltage for a

The maximum charging voltage for a 12V battery varies depending on its type of chemistry. Lead-acid batteries typically have a max charge voltage

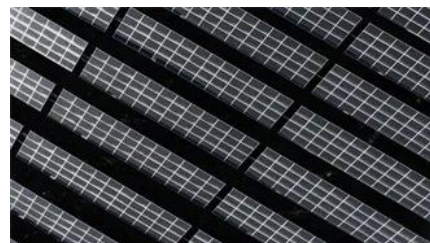


How to Charge 12V Lithium-ion Batteries: A

The optimal charging voltage for 12V LiFePO4 batteries ranges from 14.2 to 14.6 volts, equivalent to 3.55 to 3.65 volts per cell. In practical terms,

The Science Behind Optimal 12V Lithium-Ion Battery Charging Voltage

To ensure efficient charging and to prevent damage to the battery, it is essential to adhere to the recommended charging voltage. Typically, a 12V lithium-ion battery should be charged to a voltage





Merit Hiring Rule of Many January 2026

Many? Rule of Many works best with validated assessments that produce numerical scores. Assessments must be job-related, reliable, and capable of differentiating candidates.

Much and many Worksheet

Complete the sentences with either "much" or "many". Use "many" for items that can be counted. 1. We don't have much water left. 2. How _____ eggs do you need to make pancakes? 3. I



MANY Definition & Meaning , Dictionary

MANY definition: constituting or forming a large number; numerous. See examples of many used in a sentence.

many determiner

Definition of many determiner in Oxford Advanced Learner's Dictionary. Meaning, pronunciation, picture, example sentences, grammar, usage notes, synonyms and more.



MANY Definition & Meaning

The meaning of MANY is consisting of or amounting to a large but indefinite number. How to use many in a sentence.

Many: Definition, Meaning, and Examples

"Many" describes a large quantity of countable items or people, commonly used when the exact total isn't important or known. It is one of the most essential quantifiers in the English language,



[OFFICE OF PERSONNEL MANAGEMENT 5 CFR Parts 302,](#)

Comments regarding the rule of many he "rule of many" is a numerical rating process in which a ores (including veterans' preference points, if applicable, for preference eligible eterans) use one of four

[Eight people have died in dealings with ICE so far in 2026](#)

For many immigrants, the DHS said, "this is the best healthcare they have received their entire lives". "My brother was a person full of life and hope, always fighting for his wellbeing and that



[What voltage should I charge a 12 volt lithium-ion battery?](#)

You should charge a 12-volt lithium-ion battery at approximately 14.4 to 14.6 volts for optimal performance. Always use an appropriate charger designed for lithium-ion technology.

MANY , English meaning

We use the quantifiers much, many, a lot of, lots of to talk about quantities, amounts and degree. We can use them with a noun (as a determiner) or without a noun (as a pronoun).





[CC050845_final directive_HRM 9370.1A. Rule of Many and](#)

The Rule of Many supports merit-based hiring through validated, skills-based assessments, expands the pool of qualified applicants, and provides flexibility for hiring managers to make better distinctions

Many Lives, Many Masters

Many Lives, Many Masters 41 actual memories or vivid fantasies, I had found a way to help her, and I was not going to stop now. For a brief moment I thought about all of this as Catherine drifted into a



[How to Charge a 12V Lithium-Ion Battery Safely and](#)

What is the correct voltage to charge a 12V lithium-ion battery? The safe charging voltage for a 12V lithium-ion battery pack is generally between

[MANY definition and meaning , Collins English Dictionary](#)

You use many to indicate that you are talking about a large number of people or things. I don't think many people would argue with that. Not many films are made in Finland. Do you keep many books



[Many Definition & Meaning , YourDictionary](#)



Many definition: Amounting to or consisting of a large indefinite number.

[Ultimate Guide to Lithium-Ion Battery Voltage Chart](#)

You will see the right chart for the right chemistry, learn how to convert cell voltage into 12V, 24V, and 48V pack voltage, and understand when voltage is useful, when it is only a rough



[What voltage should I charge a 12 volt lithium-ion battery?](#)

To charge a 12-volt lithium-ion battery, the ideal charging voltage typically ranges between 14.2V and 14.6V. This voltage ensures that the battery reaches full charge without risking

[Reinvigorating Merit-Based Hiring through Candidate Ranking](#)

To help agencies implement this process, supplemental guidance in a question-and-answer format and a sample Rule of Many policy for agencies to implement in order to use this new method of ranking



How to Charge a 12V Lithium Battery

For 12V lithium battery, typical charge voltage is 14.2V to 14.6V. Monitor Temperature - Charger and battery should remain below 115°F (45°C).

[What Voltage Do You Need to Charge a 12V Lithium Battery? -](#)

A 12V lithium battery typically has a nominal voltage of 12.8V, but its charging voltage range is slightly higher-between 14.2V and 14.6V. This range is critical because: Undercharging



Contact Us

For catalog requests, pricing, or partnerships, please visit:
<https://www.bachelorpartyvenue.co.za>