

Emergency Rescue Energy Storage Battery Cabinet 380V



Emergency Rescue Energy Storage Battery Cabinet 380V



Making Battery Storage Systems Safer, With Mandatory Emergency

SB 38 aims to balance the need for battery energy storage—a vital component to the reliability of the electric system and the ability to integrate renewable energy into the grid—and the

Battery Energy Storage Systems: Main Considerations for Safe

This webpage includes information from first responder and industry guidance as well as background information on battery energy storage systems (challenges & fires), BESS installation



EnerShed (BESS)

Our Smart Energy Storage allows you to maximize your return on investment by supporting many use cases including peak shaving, time-of-use savings (energy

SB 38: Battery energy storage facilities: emergency response and

This bill would require each battery energy storage facility located in the state and subject to the requirement described above to have an emergency response and emergency action plan that





[Fourth meeting of the International Health Regulations \(2005\)](#)

Concurring with the advice unanimously expressed by the Committee during the meeting, the WHO Director-General determined that the upsurge of mpox 2024 continues to meet the criteria

[California Battery Energy Storage Safety Recommendations](#)

CESA and ACP-CA recommend that the Office of the State Fire Marshal, in coordinated with the CPUC, provide guidance to local authorities on the information included in emergency response plans to

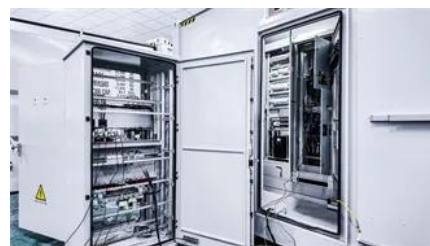


[Progress on emergency, critical and operative care](#)

WHA 76.2 "Integrated emergency, critical and operative care for universal health coverage and protection from health emergencies," passed with unanimous support during the 76th

WHO launches new country guidance for health emergency coordination

The World Health Organization (WHO) has released a comprehensive guide, the National Health Emergency Alert and Response Framework, to help countries strengthen their preparedness



Emergency care

Emergency care is powerfully aligned with the



[Battery Energy Storage System Safety Report](#)

This report will provide an overview of the codes and standards that have been adopted in the last few years around stationary battery energy storage systems and provide rural electric utilities some

primary health care agenda as it provides first contact clinical care for those who are acutely ill or injured. Pre-hospital and facility-based



Battery Energy Storage Systems (BESS)

Battery Energy Storage Systems (BESS) provide a modern and sustainable way to store and discharge electricity on demand. These systems ensure resilient

WHO's Health Emergency Appeal 2025

WHO's health emergency appeal identifies the critical priorities and resources required to address 42 ongoing health emergencies, including 17 Grade 3 crises - the most severe. These



[CPUC Sets New Safety Standards and Enhances Oversight of](#)

The CPUC also made explicit that battery storage facility owners must develop emergency response and emergency action plans, as required by SB 38.

WHO's Health Emergency Appeal 2026

Severe funding constraints across the humanitarian system have disrupted more than 6600 health facilities, cutting off care for over 53 million people. In 2026, an estimated 239 million



[Home Battery Backup - Emergency Power Storage](#)

We offer several home battery backup energy storage solutions for emergency power. Q.HOME and Generac PWRCell are scalable home systems that fit most

[Ethiopia: WHO Health Emergency Appeal 2025](#)

Ethiopia is facing a complex, prolonged humanitarian and health crisis due to conflict, the climate crisis and worsening disease outbreaks.



EMERGENCY RESCUE

Alpine Power Systems engineers and builds customized battery cabinets and enclosures for critical power applications, for utility, telecom, CATV, data center and other applications.

Emergency preparedness saves lives amid Romania's catastrophic

Emergency planning is critical This rapid, coordinated response was only possible because of Romania's investment in emergency preparedness - early warning systems, trained





Basic Emergency Care

The Basic Emergency Care Course (BEC) is a joint WHO/ICRC/IFEM learning programme for first contact health workers who care for patients with acute illness or injury. BEC teaches a systematic

[WHO scales up emergency response in earthquake-hit Myanmar,](#)

Intensifying support to earthquake-hit Myanmar, the World Health Organization (WHO) has provided nearly 100 tons of medicines, medical devices and tents so far, and is assisting in



Contact Us

For catalog requests, pricing, or partnerships, please visit:
<https://www.bachelorpartyvenue.co.za>