

Booster Station Energy Storage Device Basics



Booster Station Energy Storage Device Basics



[Basics of energy storage equipment for booster stations](#)

Energy storage stations utilize a diverse range of equipment, including batteries for short to long-duration storage, flywheels for kinetic energy storage, pumped hydroelectric systems for large-scale

[Booster Seat Planning Guide , Child Passenger Safety , CDC](#)

Research shows that proper restraint use decreases as children get older. Booster seat use reduces the risk for serious injury by 45% when compared with seat belt use alone. Booster



[2025-2026 COVID-19 Vaccination Guidance , Covid , CDC](#)

The 2025-2026 COVID-19 vaccine is recommended for people ages 6 months and older based on individual-based decision-making (also known as shared clinical decision making). The

[Rabies Pre-exposure Prophylaxis Guidance , Rabies , CDC](#)

Rabies risks Most people in the United States have a low risk being around an animal with rabies. However, a small subset of people are at higher risk. This includes those who: Work directly





Hepatitis B Vaccine , Hepatitis B , CDC

Learn about hepatitis B vaccination, safety, who should receive it, and where to get vaccinated.

[COVID-19 Booster Dose Vaccination Coverage and Factors](#)

Booster dose coverage was not optimal, and disparities by race/ethnicity and other factors are apparent in coverage uptake. Tailored strategies are needed to educate the public and reduce



Key Components of an Energy Storage Power Station: Technologies

Meta Description: Discover the essential equipment in modern energy storage power stations, including battery systems, inverters, and monitoring tools. Learn how these technologies enable grid stability

Energy Storage Basics

Weighing the costs and financial benefits of energy storage technologies can be challenging. When deciding which technology might be right for your utility, keep in mind:



[Meningococcal Vaccine Recommendations , Meningococcal , CDC](#)

CDC recommends regular booster doses for people with prolonged increased risk for

serogroup A, C, W, or Y and B meningococcal disease. However, the recommended interval

SECTION 2: ENERGY STORAGE FUNDAMENTALS

(DoD) The amount of energy that has been removed from a device as a percentage of the total energy capacity



Global Polio

Before any international travel, make sure you are up to date on your polio vaccines. Before travel to any destination listed below, adults who previously completed the full, routine polio vaccine series may

How Booster Stations Work in Utility Systems

Pumping a substance uphill requires a substantial addition of energy to overcome the elevation change, or static head. Booster stations are strategically placed to reintroduce this lost

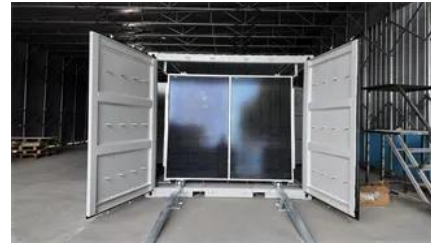


Staying Up to Date with COVID-19 Vaccines , Covid , CDC

Importance of staying up to date Getting the 2025-2026 COVID-19 vaccine is important because: Protection from the COVID-19 vaccine decreases with time. Immunity after COVID-19

ACIP Update to the Evidence to Recommendations for a 2nd COVID

Altogether, the Work Group supported recommendation that adults ages 50 years and older may receive a 2nd COVID-19 vaccine booster dose. Pertaining to immunocompromised



Comprehensive review of energy storage systems technologies,

Selected studies concerned with each type of energy storage system have been discussed considering challenges, energy storage devices, limitations, contribution, and the objective of each

[Polio Vaccine Recommendations , Polio , CDC](#)

Polio Vaccine Recommendations Key points CDC recommends that all children get 4 doses of polio vaccine as part of the routine childhood vaccination schedule. Most adults born and



[How does an energy storage booster station work?](#)

This section delves into the functionality and significance of energy storage booster stations, elucidating how they are pivotal in managing energy

Contact Us

For catalog requests, pricing, or partnerships, please visit:
<https://www.bachelorpartyvenue.co.za>