

Battery safety of Lome energy storage cabinet



Battery safety of Lome energy storage cabinet



Lome mobile energy storage equipment

Innovative Fire Safety Solutions for Energy Storage Systems: Why Lome Energy storage systems are revolutionizing power management, but with growth comes risk. This article explores how Lome

Battery issues

I've had both batteries replaced (with the correct models), done a 100 mile trip, overnight smart battery charge, charging voltage is fine, system messages cleared but I am still getting "low



[Low battery charge error , Volvo V40 Forums](#)

Hello everyone, I just bought my first car, a 2014 Volvo V40 T3, and a warning appears on the dashboard that says 'low battery charge.' The car is recently

Lithium-ion safety cabinets

With their very high energy density, they can, under certain conditions, ignite spontaneously or become unstable and explode when heated. If a technical



Main Battery Replacement



Since that battery also supplies power to the ECU memory when the car is switched off, as well as powering the stop/start system, don't ignore it. Like the main battery, Volvo recommend

Energy Storage Safety Strategic Plan

At the end, we identify general gaps and outstanding questions for energy storage safety, focusing on the three pillars of energy storage safety previously mentioned: 1) science-based safety



Lithium-ion Battery Safety

The hazards and controls described below are important in facilities that manufacture lithium-ion batteries, items that include installation of lithium-ion batteries, energy storage facilities, and facilities

Residential Lithium-Ion Battery Storage Fire Safety

- o Work with a certified and trained electrician to install your battery and provide guidance on safety considerations specific to your location.
- o Choose an accessible location for your residential battery,

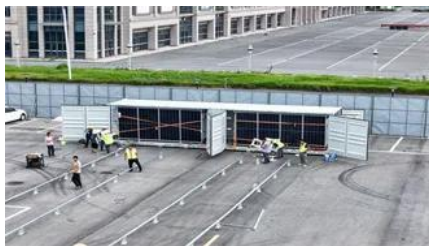


Lome solar container lithium battery energy storage fire protection

Explore the critical safety measures for large-scale lithium battery energy storage systems (BESS), including fire suppression, toxic fume mitigation, and emergency response strategies, ensuring safe

[Multiple Warning Lights/Error Messages/Battery deterioration](#)

TBH I would look at a replacement battery on the back of that info - but can't you get one from where you bought it? I don't know what a compliance centre is but does the vehicle come with



Secondary Battery

My main battery just died, had it replaced with same, and car kept giving me Battery charging, so no stop start. When stop/start worked, it was for about 10 sec, and car would start, with

[Lithium Ion Battery Cabinet: Safety Standards, Design](#)

Learn how a lithium ion battery cabinet enhances fire safety, explosion protection, ventilation, and compliance. Explore battery cabinets,



[Battery Energy Storage Systems: Main Considerations for Safe](#)

This webpage includes information from first responder and industry guidance as well as background information on battery energy storage systems (challenges & fires), BESS installation

New Battery

So I think the time has come to replace the main battery. Its the original Volvo 70ah EFB battery that was on the car from new in 2016.. The car



starts fine but I keep getting the "Low Battery



Main Battery Change

Going to change the service battery in my 15 V40cc D2. Anything I need to be ware of or look out for ??



Household Battery Recycling

Household battery recycling locations Lead-acid batteries, or "automotive type batteries," are banned from disposal. Consumers may bring lead-acid batteries to any Wisconsin retailer that sells these

Battery Recycling for Businesses

Battery Recycling for Businesses Use the chart below to determine how to handle used batteries generated by your business. Batteries that are considered hazardous must be recycled or managed



[Battery energy storage systems \(BESS\) , WorkSafe.qld.gov](https://www.worksafe.qld.gov.au/battery-energy-storage-systems-bess)

Battery energy storage systems (BESS) are using renewable energy to power more homes and businesses than ever before. If installed incorrectly or not safely commissioned, they pose serious



[Battery Energy Storage System Safety Report](#)

The goal of this document is to provide an



overview of battery energy storage safety codes for lithium-ion BESS, especially in light of the significant amount of federal funding that is available for these

Low battery charge message

The low battery charge message relates to the main battery. On vehicles with stop/start systems and intelligent alternators, the vehicle battery is designed to operate at around 80% SOC, to



Contact Us

For catalog requests, pricing, or partnerships, please visit:
<https://www.bachelorpartyvenue.co.za>