

5G Macro Base Station Smart Energy Storage Cabinet IP54



5G Macro Base Station Smart Energy Storage Cabinet IP54



5G , PCMag

The latest news, reviews, buying advice, and commentary related to the 5G cellular network rollout.

Modular Smart Energy Storage Cabinet for 5G Macro Base Stations

Base station energy storage solutions paired with site battery cabinets offer a robust, scalable, and sustainable approach to powering modern communication infrastructure.



[What Is 5G? Everything You Need To Know About 5G Networks](#)

5G is the fifth generation of wireless network technology, designed to run at much higher and faster frequencies than earlier iterations. It can provide significantly faster download and upload

5G FAQs

5G stands for the fifth generation of mobile communications. This next generation of technology promises consumers faster data rates with lower latency, or delays, in transmitting data.



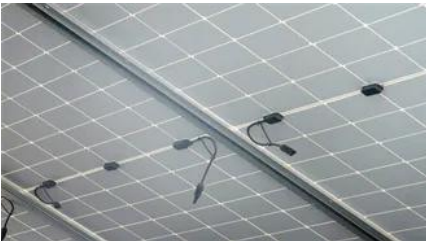
What Is 5G?

While earlier generations of cellular technology



Battery Storage System for Telecom Base Stations:

The IP54-rated cabinet provides dust and splash protection, ensuring reliable operation in harsh outdoor environments, from urban rooftops to remote rural sites.



Base Station Energy Cabinet

Built from galvanized or stainless steel materials, the cabinet achieves IP54 to IP65 ingress protection, effectively isolating internal power components from moisture, dust, and corrosion.



(such as 4G LTE) focused on ensuring connectivity, 5G takes connectivity to the next level by delivering connected experiences from the cloud to clients. 5G



Telecom Power-5G power, hybrid and iEnergy network

For a macro station, the station is built in the form of one cabinet, highly integrated with the power system, batteries and telecom equipment, and it is simple,



5G , Definition, Speed, Benefits, Health Concerns, & Conspiracy

5G, fifth-generation telecommunications technology. Introduced in 2019 and now globally deployed, 5G delivers faster connectivity with higher bandwidth and "lower latency" (shorter delay)

[5G Macro Base Station Lithium Battery Cabinet IP54](#)

Ideal for retail stores, restaurants, small factories, telecom base stations, and temporary event sites, these cabinets combine rugged protection (IP54), integrated inverters, and scalable rack



[What is 5G? Speeds, coverage, comparisons, and more](#)

Simply put, 5G is the fifth generation of mobile networking that is slowly replacing 4G/LTE networks. And 5G offers the potential for dramatically faster download and upload speeds than 4G

[5G Base Station Modular Energy Storage Cabinet IP54](#)

Base Station Energy Cabinet Built from galvanized or stainless steel materials, the cabinet achieves IP54 to IP65 ingress protection, effectively isolating internal power components from moisture, dust,



[5G Macro Base Station Uses Hainan Free Trade Port Outdoor](#)

The coordination among the communication equipment and the standard equipment in 5G macro BSs is developed to reduce both the energy consumption and the electricity costs.

[What is 5G , Everything You Need to Know About 5G](#)

What is 5G and how does it work? Learn more



about 5G technology and 5G networks, how it differs from 4G, and how it impacts communication and entertainment.



What is 5G? , Definition from TechTarget

Learn what 5G is and how it works, as well as its benefits and drawbacks. Examine 5G use cases, compare 5G to 4G, and explore the potential of 6G.

5G Macro Cells Power Solutions , EnerSys

EnerSys(R) meets the challenge of adding 5G capabilities to existing sites by providing our customers with the right amount of full-featured power and energy



[5G NR Macro Base Station-SINIC POWER , New Energy Lithium](#)

5G+AI intelligent operation and maintenance ": Built in AI chip achieves real-time fault prediction (accuracy>95%), improving operation and maintenance efficiency by 60%.

What is 5G and How Does It Work? , AT&T

5G is mobile technology that uses networks of base stations and antennas to create coverage areas called "cells." These cells overlap to form a continuous network covering an entire region. When your





[120kWh Lithium Battery Cabinet for 5G Macro Base Stations](#)

With advanced BMS intelligence for precise State of Charge (SoC) and State of Health (SoH) tracking, these battery cabinets simplify installation, reduce maintenance, and optimize runtime.

Contact Us

For catalog requests, pricing, or partnerships, please visit:
<https://www.bachelorpartyvenue.co.za>