

40 photovoltaic panels in series



Overview

So, if you connect two solar panels with a rated voltage of 40 volts and a rated amperage of 5 amps in series, the voltage of the series would be 80 volts, while the amperage would remain at 5 amps.

40 photovoltaic panels in series



[How To Wire Solar Panels In Series: Complete Guide](#)

With the knowledge and techniques outlined in this guide, you're well-equipped to successfully wire solar panels in series and create efficient, code

[Must '@' and '%40' be treated equivalently in URL paths?](#)

The URI standard is STD 66, which currently maps to RFC 3986 (which updates RFC 1738). The section 6.2.2.2. Percent-Encoding Normalization defines how to normalize percent



[Guide to Connect Solar Panels in Series - PowMr](#)

Learn how to connect solar panels in series and calculate the maximum number of solar panels in a series string for safe, efficient performance.

python

Am trying to install cryptography-40.0.2-pp39-py39_pp73-win_amd64.whl on a server that is not connected to the internet. Have upgraded to the latest version of pip 23.1.



[How do I fix the error 'Named Pipes Provider, error 40](#)



Named Pipes Provider, error: 40

Named Pipes Provider, error: 40 - Could not open a connection to SQL Server? Asked 15 years, 9 months ago Modified 10 years, 5 months ago Viewed 31k times



How to make more than 40 security() calls?

The workaround is not to have more security() calls, but to be able to fetch many more values than 40, with those 40 security() calls, by using tuples. As demonstrated in my answer, 7



Named Pipes Provider, error: 40 - Could not open a connection to SQL Server I tried using the local IP address to connect as well as a public one. I've tried: Yes, the site can



[How to fix error "Named Pipes Provider, error: 40"](#)

The server was not found or was not accessible. Verify that the instance name is correct and that SQL Server is configured to allow remote connections. (provider: Named Pipes Provider,

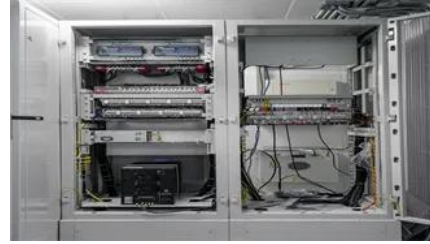


[How To Wire Solar Panels In Series Vs. Parallel](#)

So, if you connect two solar panels with a rated voltage of 40 volts and a rated amperage of 5 amps in series, the voltage of the series would be 80 volts, while

[Solar Panels Series and Parallel Calculator](#)

Definition: This calculator determines the total voltage, current, and power output of solar panels connected in series and parallel configurations. Purpose: It helps solar installers and DIY enthusiasts



[Vulnerabilities in spring-webmvc-5.3.39 to 5.3.40](#)

Discussion on vulnerabilities in specific versions of spring-webmvc and potential solutions provided by the community.

Why positive response is always plus 40 and negative response is 7F

In UDS the first byte of a positive response is always SID + 40 hex (SID = Service Identifier, the first byte of the request) and the first byte of a negative response is always 7F hex:



[Figuring Out How Many Panels in Series And Parallel](#)

Configuring the right number of panels in series and parallel is essential to take full advantage of your MPPT. The MPPT has a specific voltage

[Solar Panel Series and Parallel Calculator](#)

Enter your solar panel's voltage (V_{mp}), current (I_{mp}), and the number of panels you're wiring together. Then hit Calculate to instantly see total voltage, current, and wattage for both series and parallel wiring.



Contact Us

For catalog requests, pricing, or partnerships, please visit:
<https://www.bachelorpartyvenue.co.za>